

OPTIMOVER M

Electric Tug



The Optimover M allows loads of up to 4,000 kg to be easily pushed and towed. Its compact size meets the growing expectations of companies to improve their competitiveness and optimize their workflow. Designed for different types of industrial, food, logistics, hospital and other applications.



OPTIMOVER M

Electric Tug

TECHNICAL SHEET

Identification

Product code	OPTIMOVER M 2T	OPTIMOVER M 3T	OPTIMOVER M 4T
Recommended loading weight - Wheels	2 000 kg	3 000 kg	4 000kg
Recommended loading weight - Rails	8000 kg	12 000 kg	16 000 kg
Weight of the machine with battery	400 kg	400 kg	400 kg
Type of training	Electric		
Braking	Direct current brake		
Type of drive wheels	Wide notched		
Power of the drive motor	2 x 750 W	2 x 750 W	2 x 750 W
Type of controller	Asynchrone		
Maximum programmable speed	5km/h max		
Control head	Power steering system		

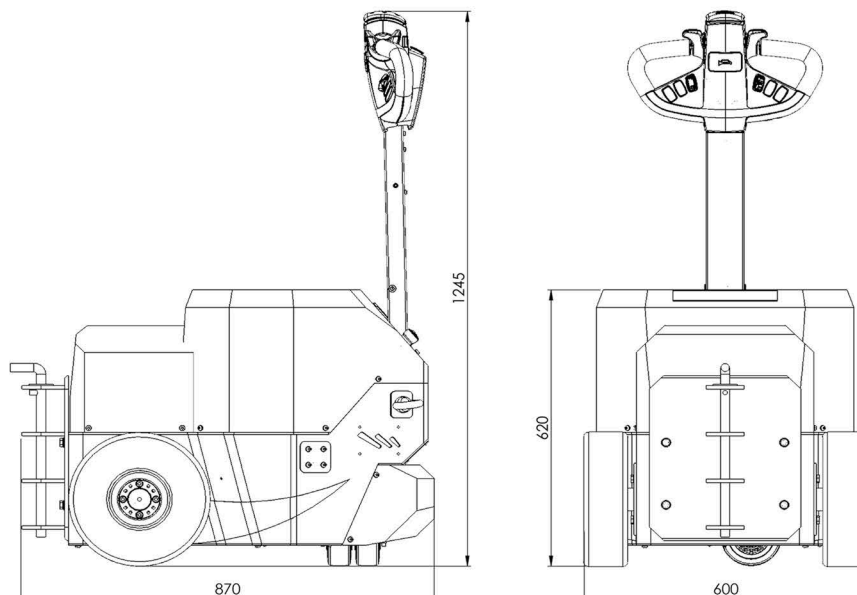
Battery option

Batterie Gel (de série)	2 x 100 Ah 12V
Lithium battery	120 Ah 24V
External charger	35 Ah

Available options

AGV option	Stainless steel belt tracking with electromagnetic TAGs
Box coupling	For a secure manual interface
Illuminated column	Security element
Combi medium	Electrical interface
Manual hook	Manual hook for trolley equipped with a drawbar
Crochet	Hook for profile
Shovel / High shovel	To push without interface
Drive wheels	Wheels with non-staining tyres

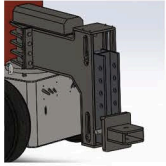
PRODUCT DIMENSION WHITHOUT OPTION



OPTIMOVER M

Electric Tug

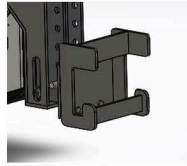
AVAILABLE OPTIONS



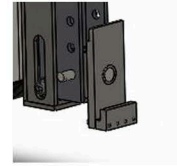
Box coupling



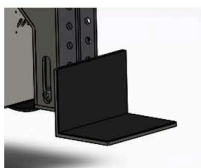
Column
luminous



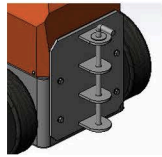
Hook



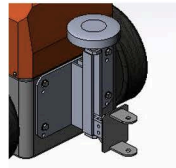
Combi médium



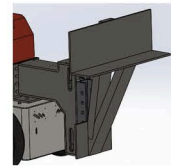
Shovel



Manual hook

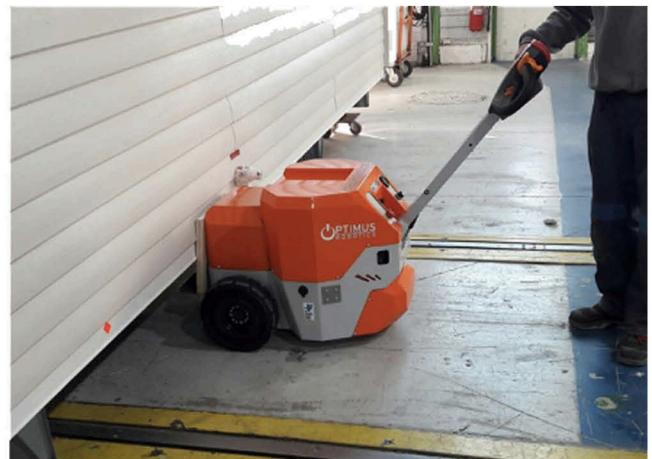


Adjustable pin
high up



Hight shovel

AVAILABLE APPLICATIONS



CONTACT
MG-Tech Handling - 6A rue Henri François
77330 Ozoir la Ferrière
Tél : + 33 1 75 13 20 55
handling@mg-tech.fr
www.leanlog-solutions.com

